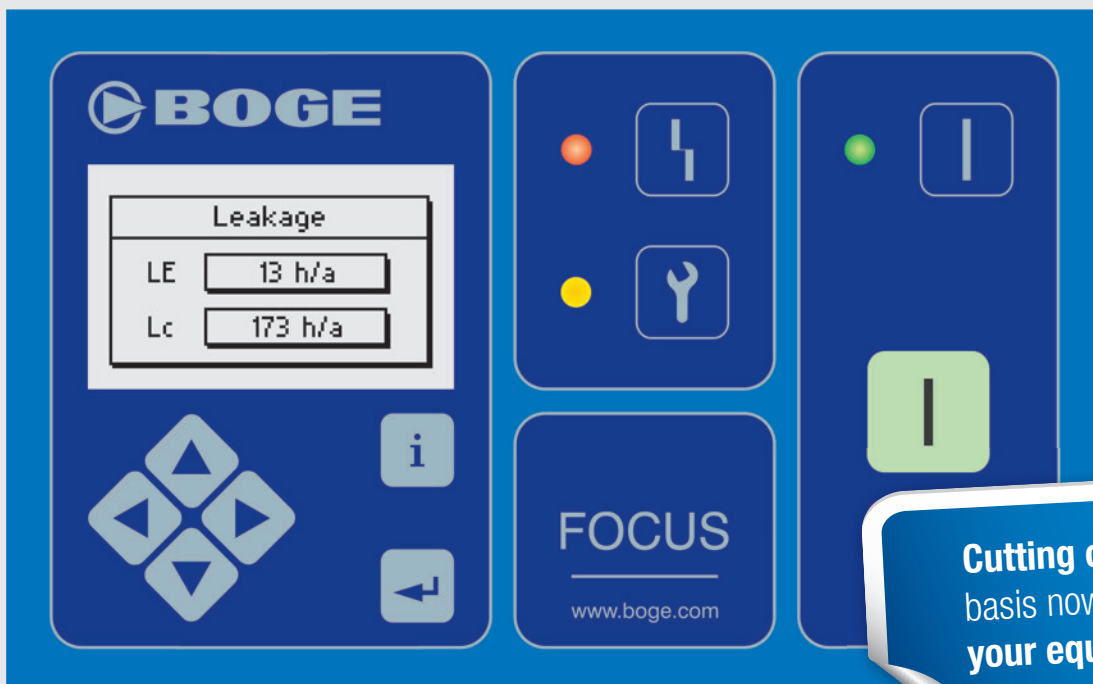
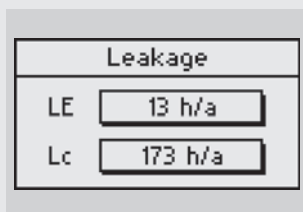


Cracking down on cost guzzlers: The **BOGE Leakage Monitor**.



Cutting costs on a regular basis now or simply **upgrade your equipment!**



AUTOMATIC MEASURING

The BOGE leakage monitor is designed to automatically measure the operating load times during times when the compressor is only operating to make up for the leakages. Such times are extrapolated for the whole year before being displayed.

ONBOARD OR RETROFITTED

On new machines the BOGE leakage monitor is integrated as standard in the BASIC or FOCUS controls. Existing models can be easily retro-fitted with the leakage module.

FOR SMALLER NETWORKS

The BOGE leakage monitor is intended for dependable leakage monitoring of single compressors or smaller networks of up to 3 compressors. Losses can rapidly add up over the course of the year!

TARGET ORIENTED OPTIMIZATION

The BOGE leakage monitor is engineered to tell you exactly when it is time for action. This enables your BOGE service partner to carry out leakage detection and make the repairs.

BOGE KOMPRESSOREN
Otto Boge GmbH & Co. KG

P.O. Box 10 07 13 · 33507 Bielefeld

Otto-Boge-Straße 1–7 · 33739 Bielefeld

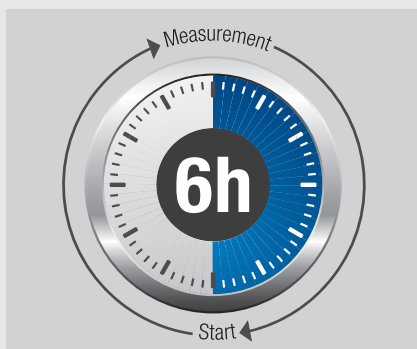
phone +49 5206 601-0

fax +49 5206 601-200

 info@boge.com · www.boge.com

Three steps to **cutting costs** – using the **BOGE leakage monitor!**

No chance for cost guzzlers: Leakages tend to occur in almost every compressed air network and are responsible for up to 20 percent of compressed air costs. From now, BOGE can take care of this problem on an ongoing basis: the BOGE leakage monitor will automatically measure leakage losses and display the result on the compressor controller. This will enable you to decide when a professional leakage repair should be carried out: in three easy steps!



1. MEASURING

Just before the end of a shift (for example over night or during the weekend) simply activate the BOGE leakage monitor by means of the control and start it by pressing the enter key. Important: The intended compressed air consumption must be zero, viz. all consumption points to be switched off and only compressors with leakage monitor to be switched on. The BOGE leakage monitor will start measuring the operating load times six hours after initiating which, at this stage, only serves the leakage losses – a total waste of energy. A single measurement operation is carried out over a period of six hours

2. READING

Any leakage losses can be read off the controller display on the next working day. The BOGE leakage monitor will extrapolate the losses over the course of a year (123 wasted hours of operation per year, as illustrated in the example). This will enable you to make a commercial decision as to whether the costs resulting from leakage losses are likely to pay back the investment for professional leak detection and subsequent repair.

3. CUTTING COSTS

The present example is intended to show the amount of costs that can be saved: If the BOGE leakage monitor shows an idle operation time of 350 hours per year, you will pay, based on an electrical power consumption of 24 kW and an electricity price of 0.11 €/kWh, **more than 960 Euros just for replenishing your leakage losses** – for electricity alone!

It's high time to contact your BOGE service engineer: He will be ready to locate and professionally repair your air leaks to ensure that from now on you are only paying for the air to work!